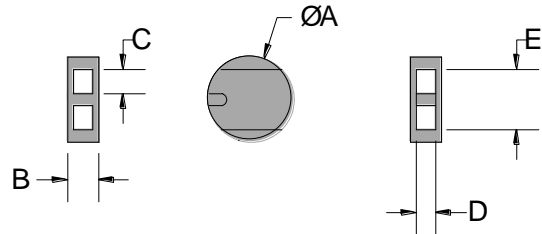




LEAD SEAL - ROUND Data Sheet

Acme Reg No: 1805884



The **Round Lead Seal** is designed with two parallel holes and a knot chamber. During fitting the wire or string is threaded through the two parallel holes and crossed inside the knot chamber before closing with the sealing tool to prevent slippage.

Technical Data

Recommended Applications

Gas, Water & Electric meters, Drums, Valves, Refineries, Post Bags, Cages, Lockers

Material

99.9% Refined Lead

Marking

Plain or Company name/logo embossed or de-bossed using sealing tool with engraved dies.

Sealing Tool

LS24 - YPL 9062 supplied as standard with plain 10mm dies

LS4 & LS41- YPL 9083 supplied as standard with plain 12mm dies

Reference	Sizes in mm	LS4	LS24	LS41
A	Diameter	12.5	8.8	10
B	Thickness	5.5	4.6	4.0
C	Hole width	3.2	2.5	2.5
D	Hole height	3.4	2.3	2.2
E	Chamber width	9.0	6.3	7.0

Packaging

Standard Packaging : 1,000 seals/carton
 Carton Dimensions : 14cm x 19cm x 7cm
 Carton weight : LS4 - 3.7kg/carton
 : LS24 - 1.7kg/carton
 : LS41 - 1.8kg/carton