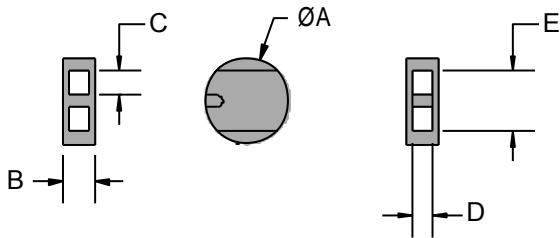


## LEAD SEALS – Data Sheet

The Standard **Round Lead Seal** is designed with two parallel holes and a knot chamber. During fitting the wire or string is threaded through the two parallel holes and crossed inside the knot chamber before closing with the sealing tool to prevent slippage. The **LS31F Cross-hole Lead Seal** is designed so that the lashed wire is crimped together when the seal is compressed with the sealing tool. The effect of crimping the lashed wire together alleviates any chance of twisting the wire out of the hole without leaving clear evidence of tampering. To optimize security the sealing tool dies can be engraved to emboss or deboss characters/numbers/logo onto the seal so giving reference to the application user.

Std Round Lead Seal

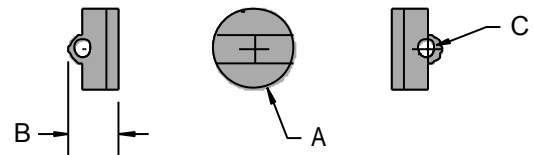


### Technical Data

#### Std Round Lead Seals

Reference	Size - mm	LS4F	LS29F	LS41F
A	Diameter	12.5	9.0	10
B	Thickness	5.5	4.5	4.0
C	Hole W	3.2	2.4	2.5
D	Hole H	3.2	2.3	2.2
E	Chamber	9.0	6.3	7.0

Cross Hole Lead Seal



### Technical Data

#### Cross Hole Lead Seals

Reference	Sizes in mm	LS31F
A	Diameter	11
B	Thickness	5.8
C	Hole size	1.8

### Recommended Applications

Gas, Water & Electric meters, Drums, Valves, Airline Baggage Pods, Containers, Rail freight, Refineries, Post Bags, Cages, Lockers

### Material

99.9% Refined Lead.

### Marking

Plain or Company name/logo embossed or debossed using sealing tool with engraved dies.

### Std Round Seal Sealing Tool

LS29F & LS41F - YPL 9062 supplied with plain 10mm dies as standard  
 LS4F - YPL 9083 supplied with plain 12mm dies as standard

### Cross Hole Sealing Tool

YPL 9062 supplied with plain 10mm dies as standard

### Nett Weight / 1000

LS4F – 3.80kgs  
 LS29F – 1.60kgs  
 LS31F – 2.55kgs  
 LS41F – 2.36kgs

### Packaging

Standard Packaging - 1,000 seals/carton