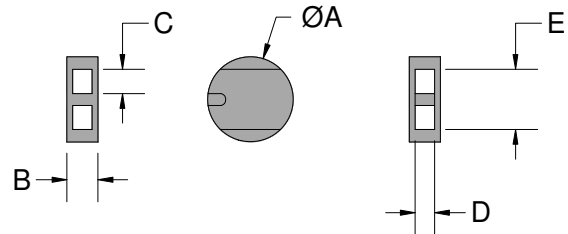




LEAD SEAL - ROUND Data Sheet



The **Round Lead Seal** is designed with two parallel holes and a knot chamber. During fitting the wire or string is threaded through the two parallel holes and crossed inside the knot chamber before closing with the sealing tool to prevent slippage.

Technical Data

Recommended Applications

Gas, Water & Electric meters, Drums, Valves, Refineries, Post Bags, Cages, Lockers

Material

99.9% Refined Lead

Marking

Plain or Company name/logo embossed or debossed using sealing tool with engraved dies.

Sealing Tool

LS24F, LS29F & LS41F - YPL 9062 supplied with plain 10mm dies as standard

LS4F - YPL 9083 supplied with plain 12mm dies as standard

Reference	Size - mm	LS4F	LS24F	LS29F	LS41F
A	Diameter	12.5	8.8	9.0	10
B	Thickness	5.5	3.8	4.5	4.0
C	Hole W	3.2	1.4	2.4	2.5
D	Hole H	3.2	1.4	2.3	2.2
E	Chamber	9.0	6.3	6.3	7.0

Packaging

Standard Packaging : 1,000 seals/carton
 Carton Dimensions : 14cm x 19cm x 7cm
 Carton weight : LS4F - 3.7kg/carton
 : LS24F - 1.7kg/carton
 : LS29F - 1.75kg/carton
 : LS41F - 1.8kg/carton