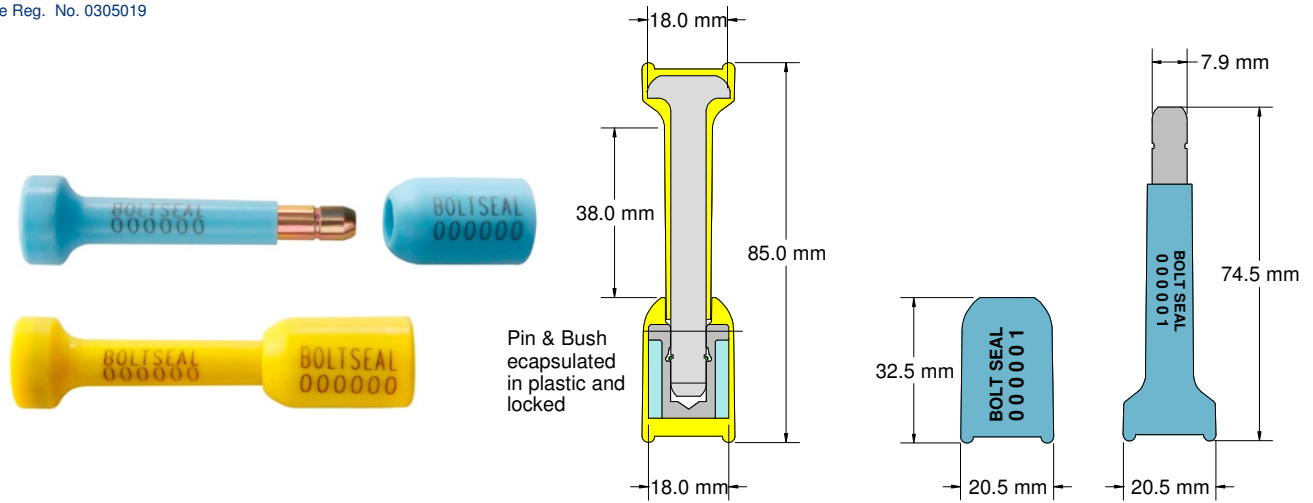




BOLT SEAL Data Sheet

Acme Reg. No. 0305019



The Acme **Bolt Seal** is an IS 17712:2010 compliant high security seal designed for high value ISO container cargo shipments. The plastic coated bolt and locking bush is laser marked with identical sequential numbers for added security. When locked the bolt spins freely to confirm seal integrity. To maintain digital verification that they are genuine Certificates of IS 17712:2010 compliance are available for distribution by email only. This IS 17712:2010 'H' compliant seal qualifies as a High Security Seal that may be used on U.S.A. bound containers moving under USCBP C-TPAT regulations

NOTE: The Pin Head and Locking Bush measurements shown above are the minimum production specified sizes and reflect the 18mm minimum steel requirements in IS17712:2010. Actual sizes exceed these and are verified by formal Certification as received from the accredited test laboratory.

Technical Data

Recommended Applications

Rail, Sea & Air Container Freight, Doors, Hatches, Trailers, Storage.

Material

Carbon steel with zinc chromate finish
 Bolt - High visibility polypropylene coated
 Lock Bush - High visibility polypropylene coated

Available Operating Length

38mm

Dimensions

Bolt - 19.0mm dia head and 7.9mm dia shaft
 Bush - 18.5mm dia head reducing to 12.0mm

Average Physical Strength (Test Data)

Tensile Pull Strength	-	27.31(kN)
Shear Test	-	907.2(kg-f)
Impact Test at 18° C	-	43-53(Nm)
Impact Test at -27° C	-	42-50(Nm)
Bending Test	-	74(Nm)

Acceptance

IS 17712:2010 'H' compliant High Security Seal
 HM Revenue & Customs High Barrier Seal Class 1
 EU Regulation 2454/93, Article 386, Annex 46A
 US In-Bond Security

Marking

"ACME SEALS GROUP" moulded into bolt and bush as manufacturer.
 "H" moulded into bolt and bush indicating high security bolt seal.
 Laser marking
 Consecutively numbered on bolt and bush as standard
 Optional Customer name/logo on bush

Colours

Pastel shades of pink, blue, green, yellow and peach, also black and white.
 Other colours may be available on request.

Packaging

Standard Packaging	: 200 seals per carton
Carton Dimensions	: 40cm x 28cm x 23.4cm
Carton weight	: 15kg per carton