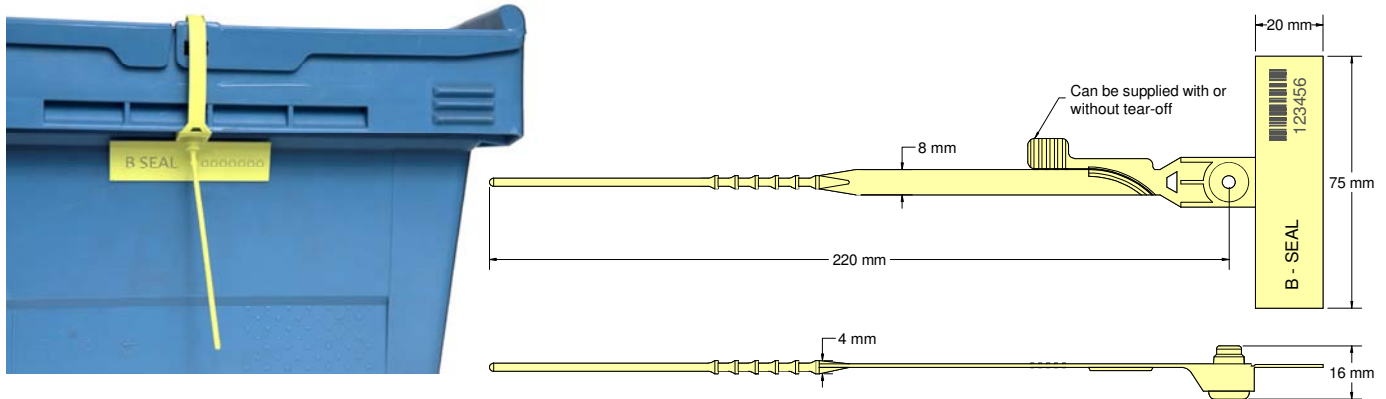




B SEAL Data Sheet

Acme Reg. No 0604010



The Acme **B Seal** is a special purpose pull-tight seal manufactured from two dissimilar materials. The Acetyl insert is durable and will withstand freezing and boiling conditions, whilst the polypropylene body is flexible for easy use. The design features rolled heat staking technology to secure the insert to the body, which provides clear evidence of tampering if forced open or cut. This seal is an ideal alternative to the conventional arrow type seals commonly used to secure ballot and tote boxes and has the advantage of a neatly designed hinged tag, which fits flush to the side of the box, allowing easy reading of a security number and/or barcode.

Technical Data

Recommended Applications

ALC (Attached Lidded Containers), Bags, Boxes.

Material

Body - Polypropylene
Insert - Acetyl

Available Operating Length

22cm (overall 27cm)

Tag Marking Dimensions

20mm x 75mm

Ribbon Diameter

3.9mm

Average Breaking Strength

15kg

Marking

Laser
Consecutively numbered as standard
Optional Customer name/logo
Optional Laser Barcoding

Colours

Pastel shades of pink, blue, green, yellow and peach,
also black and white.
Other colours may be available on request.

Packaging

Standard Packaging : 2 per mat and 1,000 seals/carton
Carton Dimensions : 47cm x 38.5cm x 19cm
Carton weight : 4.84kg/carton